



PRESTIGE & VILLAGE

UK's finest properties

£625,000 GUIDE PRICE

INKERPOLE PLACE, CHELMSFORD, , CM2 6UD

A beautifully presented extended family home located in the popular Chelmer Village area of Chelmsford. This super property offers generous accommodation that includes a large lounge with feature fireplace, dining area with doors to the garden, a stunning kitchen/family room with central island and beautiful seating area overlooking the garden, utility room and ground floor cloakroom. On the first floor there are Four Good Size Bedrooms, and Two Bathrooms. The property also has an enclosed landscaped rear garden, garage and driveway. VIEWING RECOMMENDED





- Extended
- Detached Family Home
- Stunning Kitchen
- Large Lounge
- Garage & Driveway
- Four Bedrooms
- Two Bathrooms
- Popular Location





LOUNGE

Spacious lounge with fire place

DINING AREA

With Doors to the rear garden

KITCHEN/FAMILY ROOM

A Large Kitchen & Family Area with central island

UTILITY ROOM

Space For Appliances

CLOAK ROOM

Ground Floor WC

MASTER BEDROOM

Large, Bright Double Bedroom

EN-SUITE

Shower Room

BEDROOM TWO

Good Size Double Bedroom

BEDROOM THREE

Double Bedroom

BEDROOM FOUR

Currently used as an office

BATHROOM

Family Bathroom

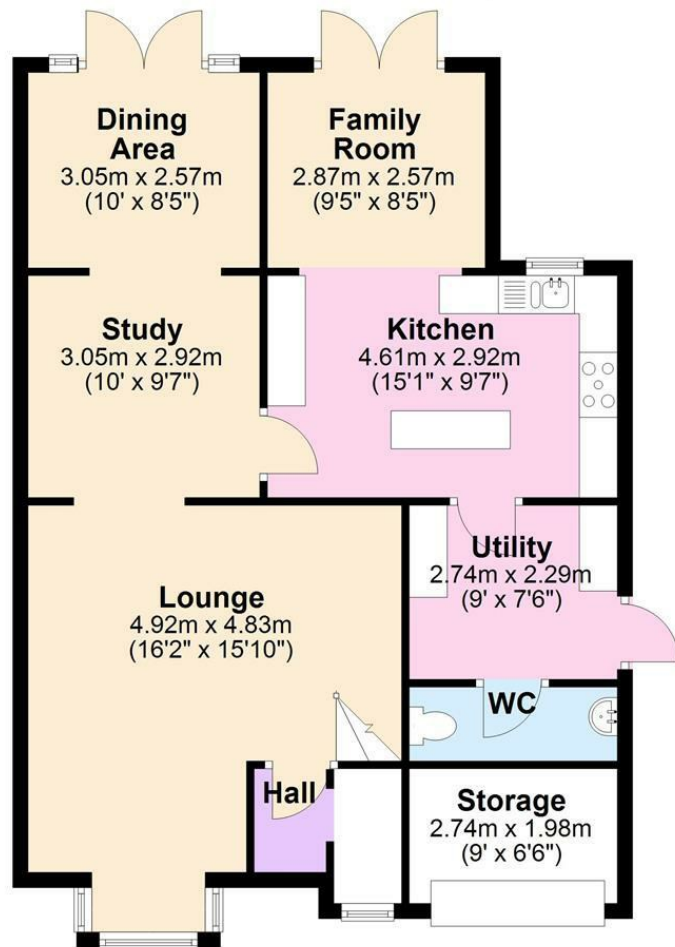
GARAGE

Garage & Parking



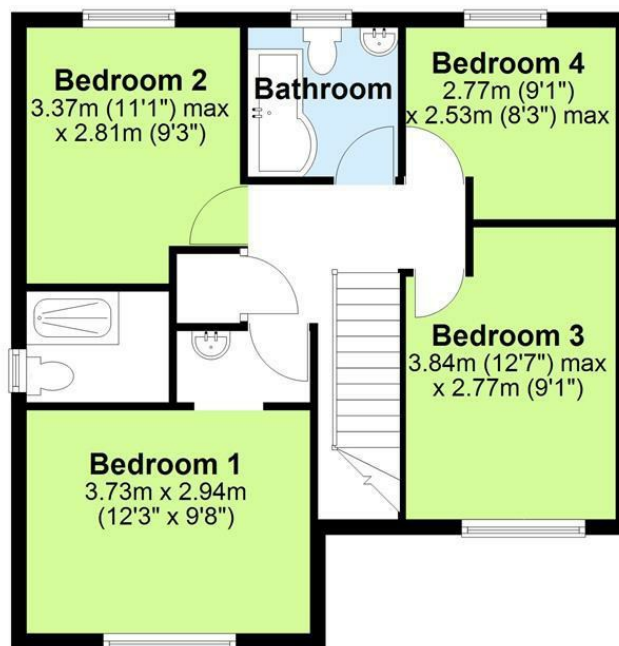
Ground Floor

Approx. 79.6 sq. metres (857.0 sq. feet)



First Floor

Approx. 55.8 sq. metres (600.3 sq. feet)

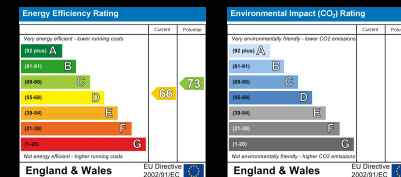


Total area: approx. 135.4 sq. metres (1457.3 sq. feet)



Band

These particulars, whilst believed to be accurate are set out as a general outline only for guidance and do not constitute any part of an offer or contract. Intending purchasers should not rely on them as statements of representation of fact, but must satisfy themselves by inspection or otherwise as to their accuracy. No person in this firm's employment has the authority to make or give any representation or warranty in respect of the property.





PRESTIGE & VILLAGE

UK's finest properties

PROPERTY@PRESTIGEANDVILLAGE.CO.UK

WWW.PRESTIGEANDVILLAGE.CO.UK